

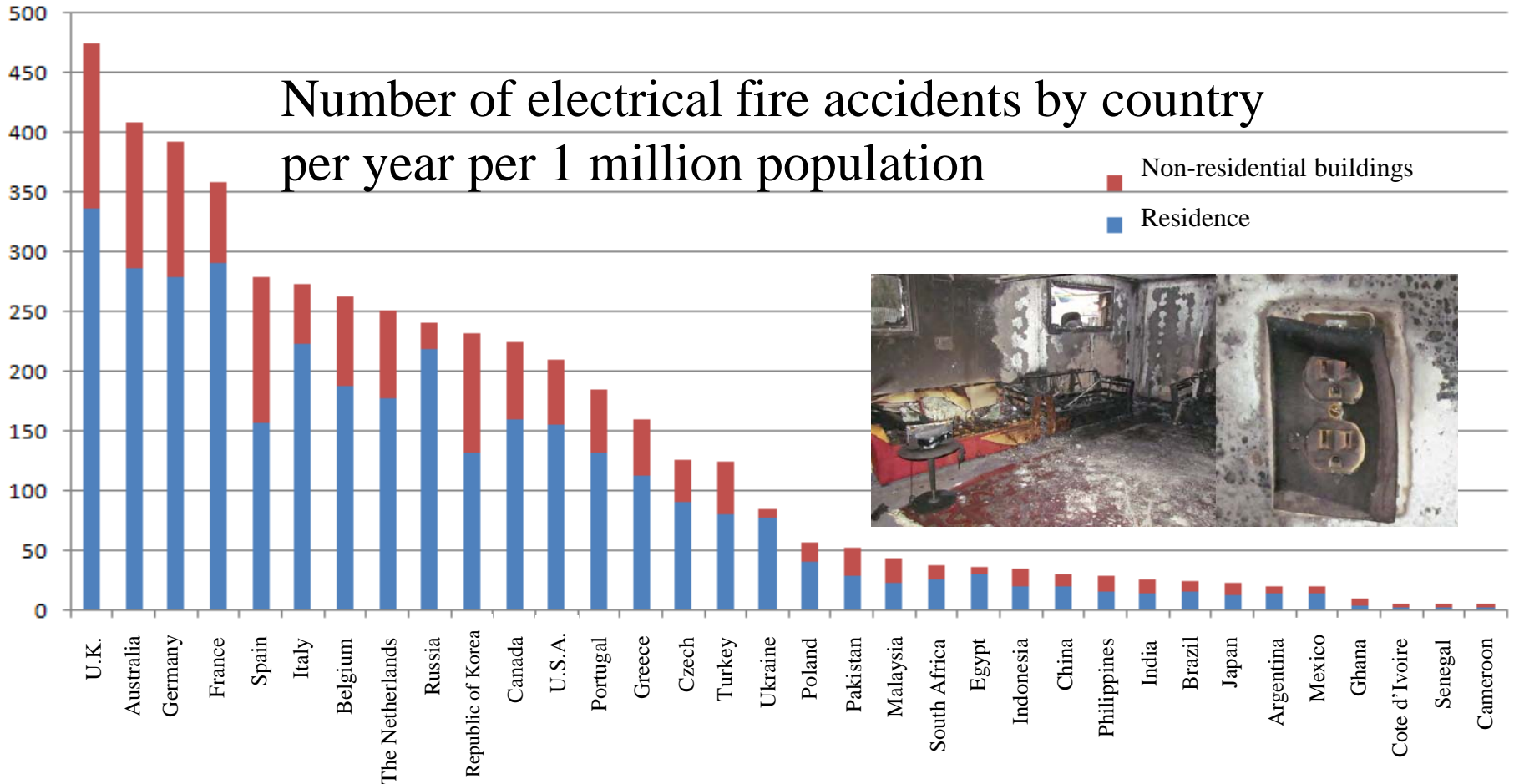
Electricity Disasters and Roles of Electrical Safety Inspection Associations in Japan

Michio Abe

Forum of Electrical Safety Inspection Associations, Japan

Overview of electricity accidents

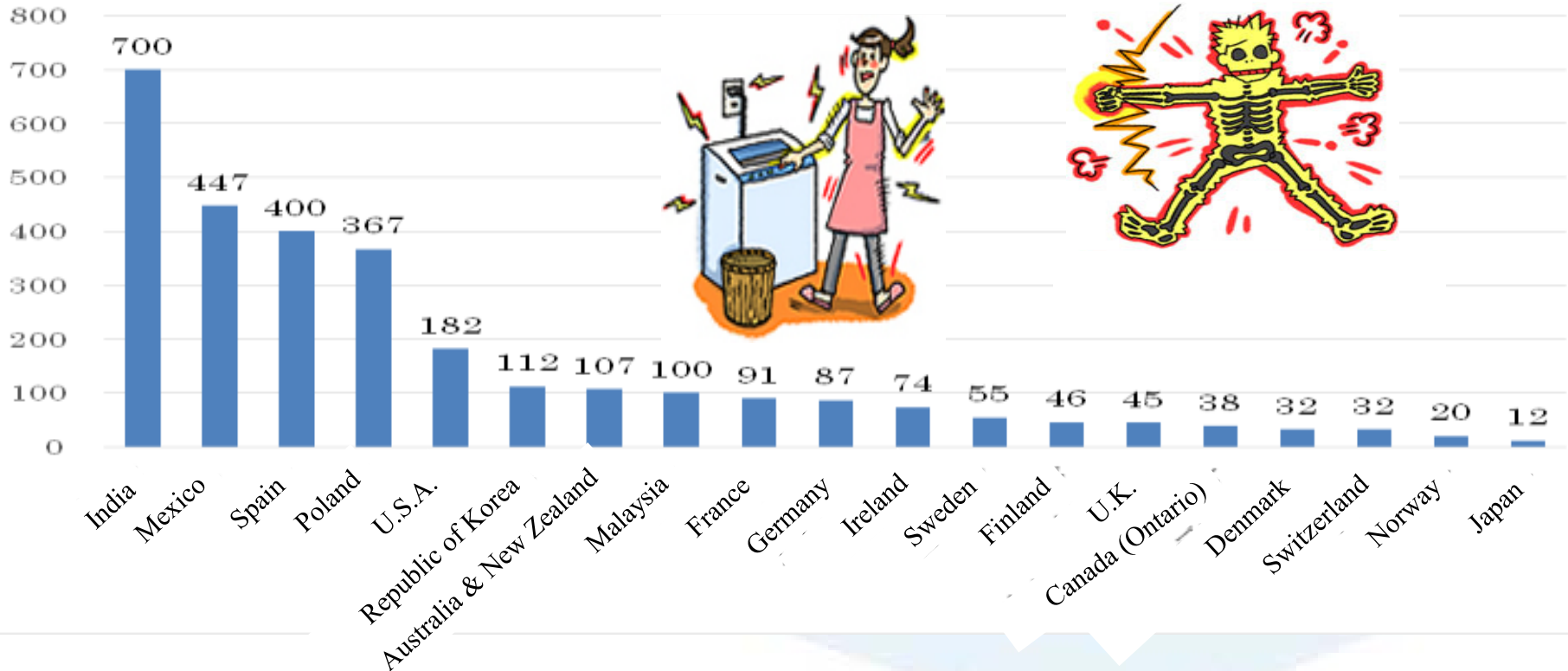
(1) Electrical fire accidents (Source: European Copper Institute)



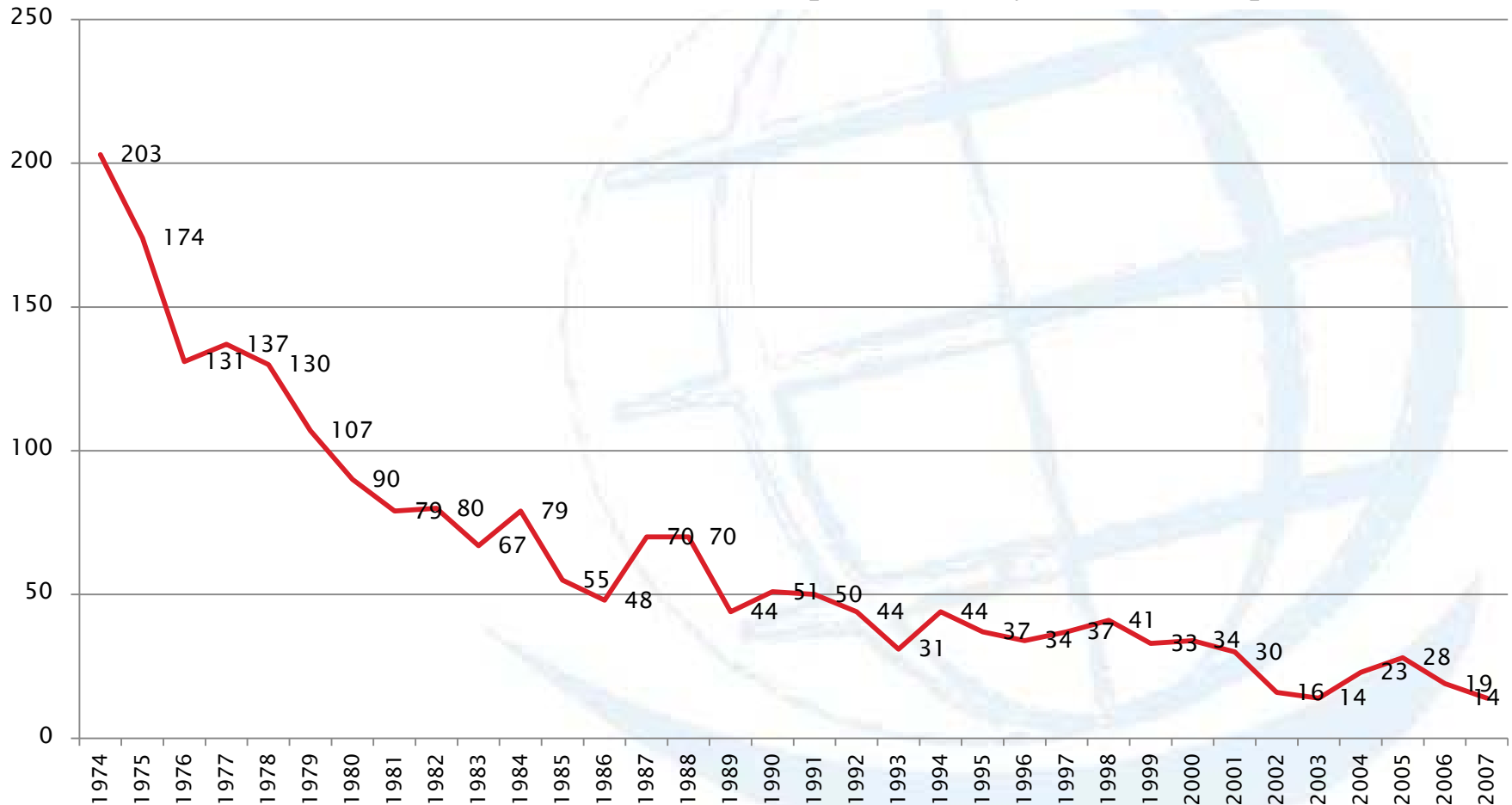
(2) Number of deaths by electrical shock

Official records by country

Number of deaths by electrical shock per year per 100 million population



Yearly transition of number of deaths by electrical shock in Japan
 (Source: National Institute of Occupational Safety and Health, Japan)



Primary services of Electrical Safety Inspection Associations in Japan

(1) Survey/diagnosis service

Conduct periodic door-to-door surveys and diagnoses on electrical safety at general households, shops, etc. on behalf of electric power companies

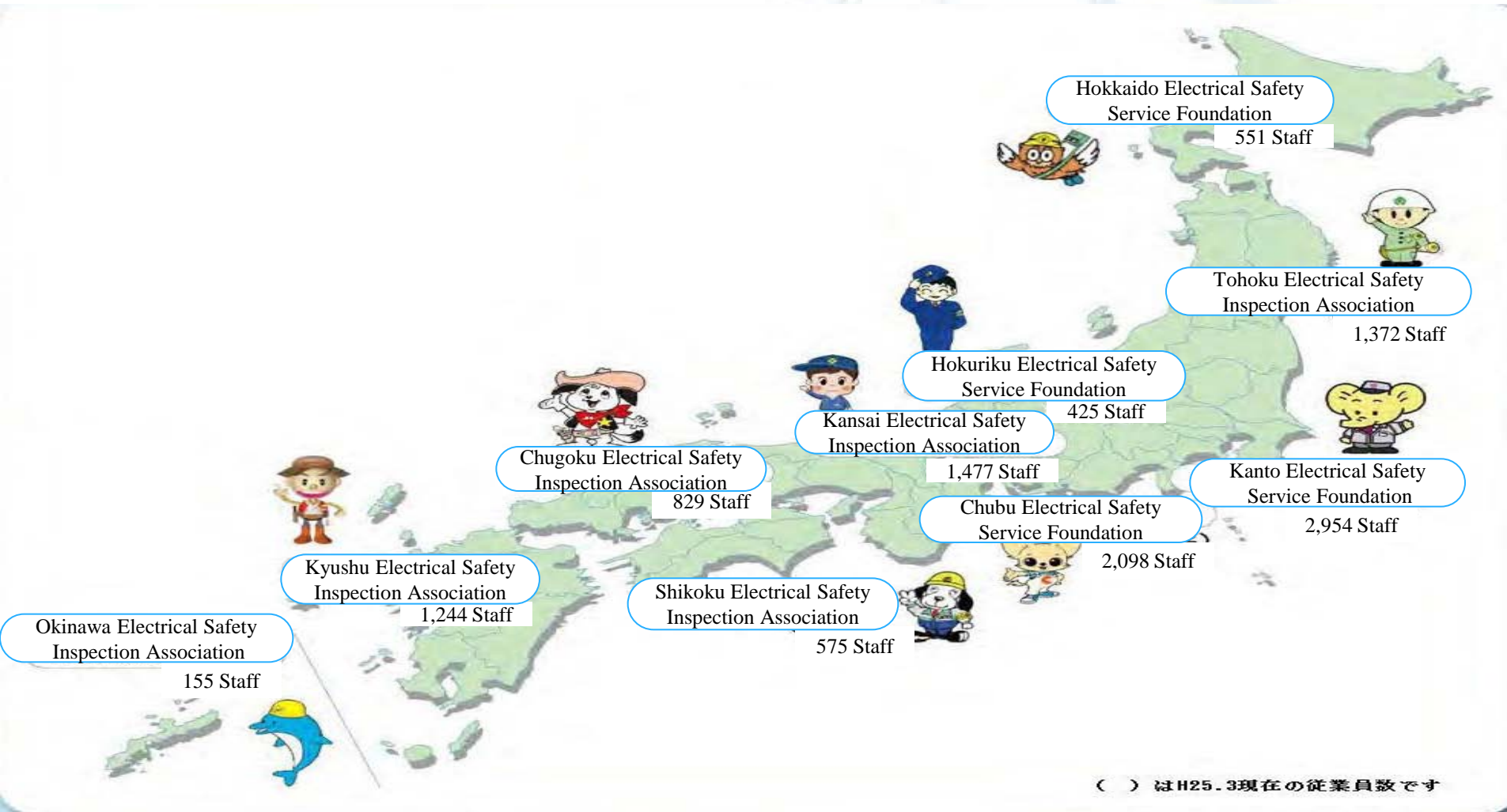
(2) Safety management service

Conduct safety management for electrical equipment of buildings, factories, etc. on behalf of equipment owners/operators

(3) Public relations service

Public relations (communication) including educational and public awareness activities on electrical safety, energy-saving, etc.

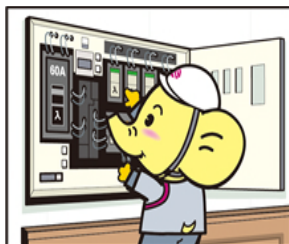
Locations of Electrical Safety Inspection Associations in Japan



Electrical safety survey/diagnosis for general households

Periodic survey

Conducted on behalf of electric power companies

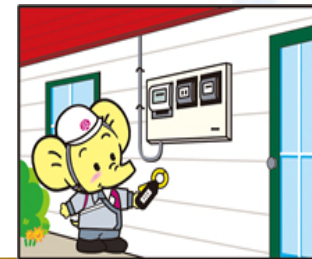


Distribution board and breakers

Interior wiring and electric appliances (optional: if desired)



Measurement of leakage current near exterior wiring



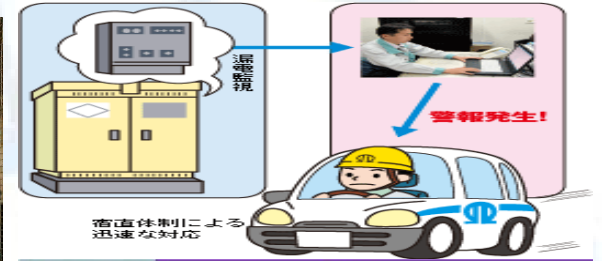
Electrical safety management service for buildings, factories, etc.



Monthly inspection



Annual inspection



Accident response



Testing service



Safety education

THANK YOU

MERCI - 감사합니다



fisuel