

Electrical Safety of General Households in Japan

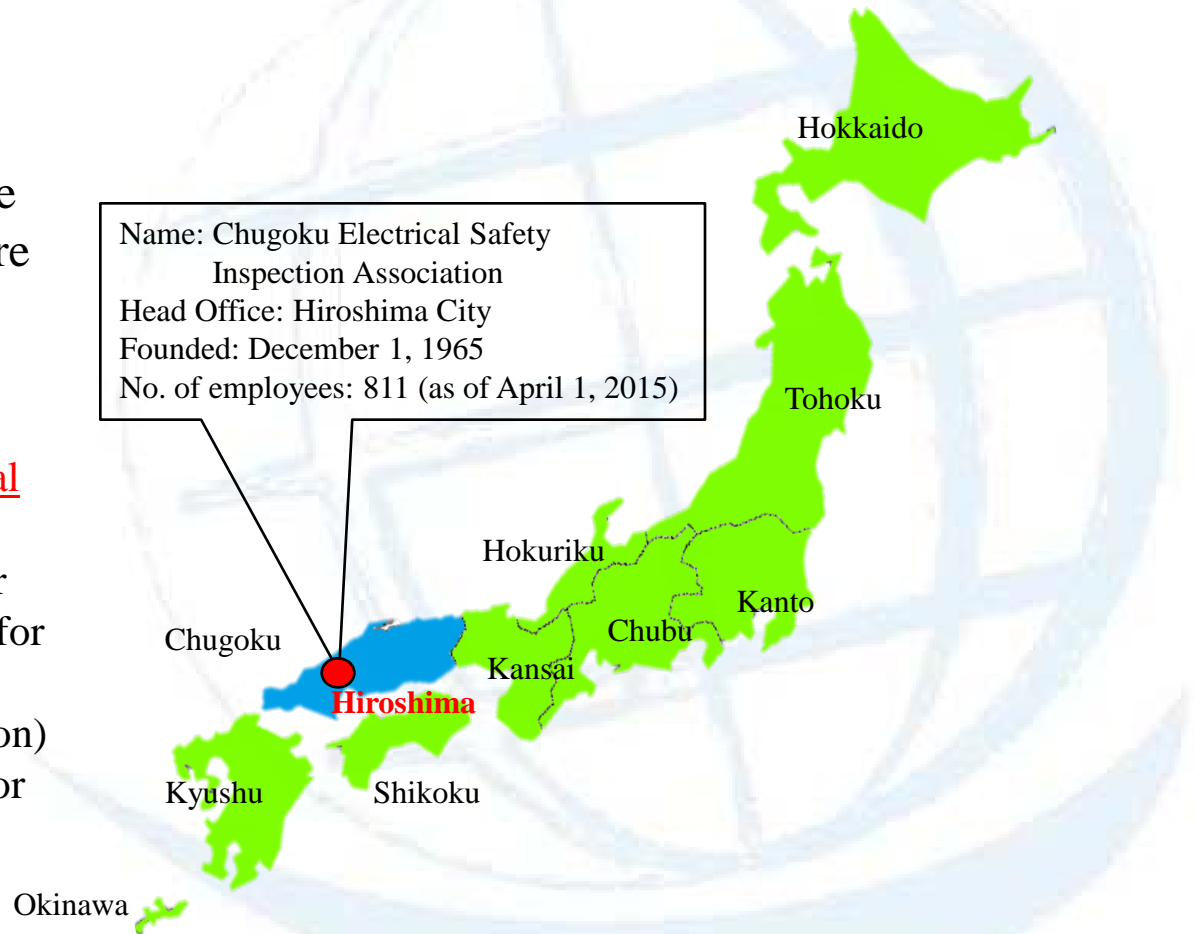


Makoto Abe
Survey Dept.,
Chugoku Electrical Safety Inspection Association, Japan

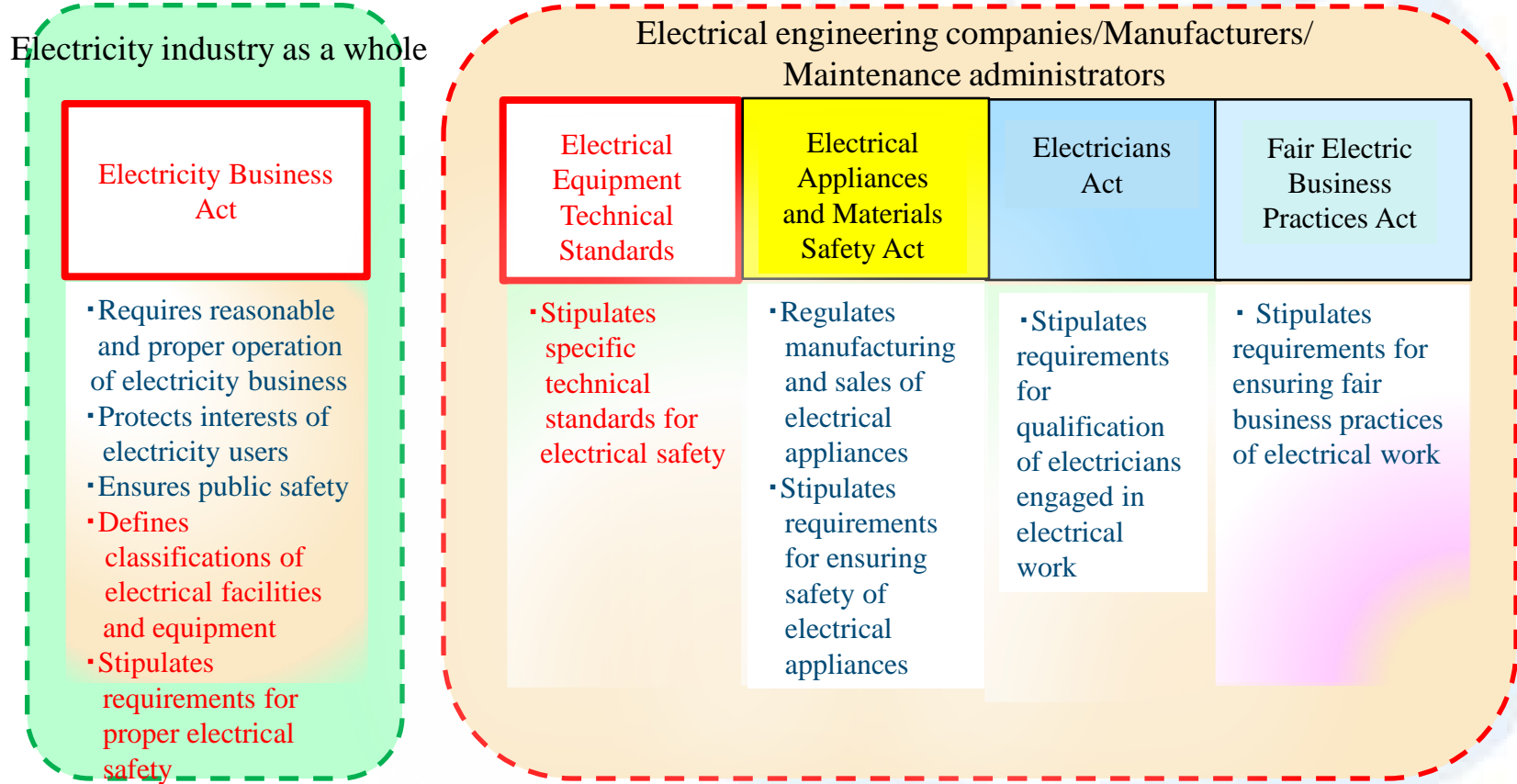
Outlines of Electrical Safety Inspection Associations in Japan

There are 10 regional Electrical Safety Inspection Associations in Japan, whose primary services/activities are as follows:

- Survey service for electrical facilities/equipment for general use
- Safety management service for electrical facilities/equipment for private use
- Public relations (communication) activities on electrical safety for electricity users



Laws and regulations on electricity



Classification of electrical facilities/equipment pursuant to Electricity Business Act

Electrical facilities/equipment

Factories, buildings, power-company facilities, etc.

General households, shops, etc.

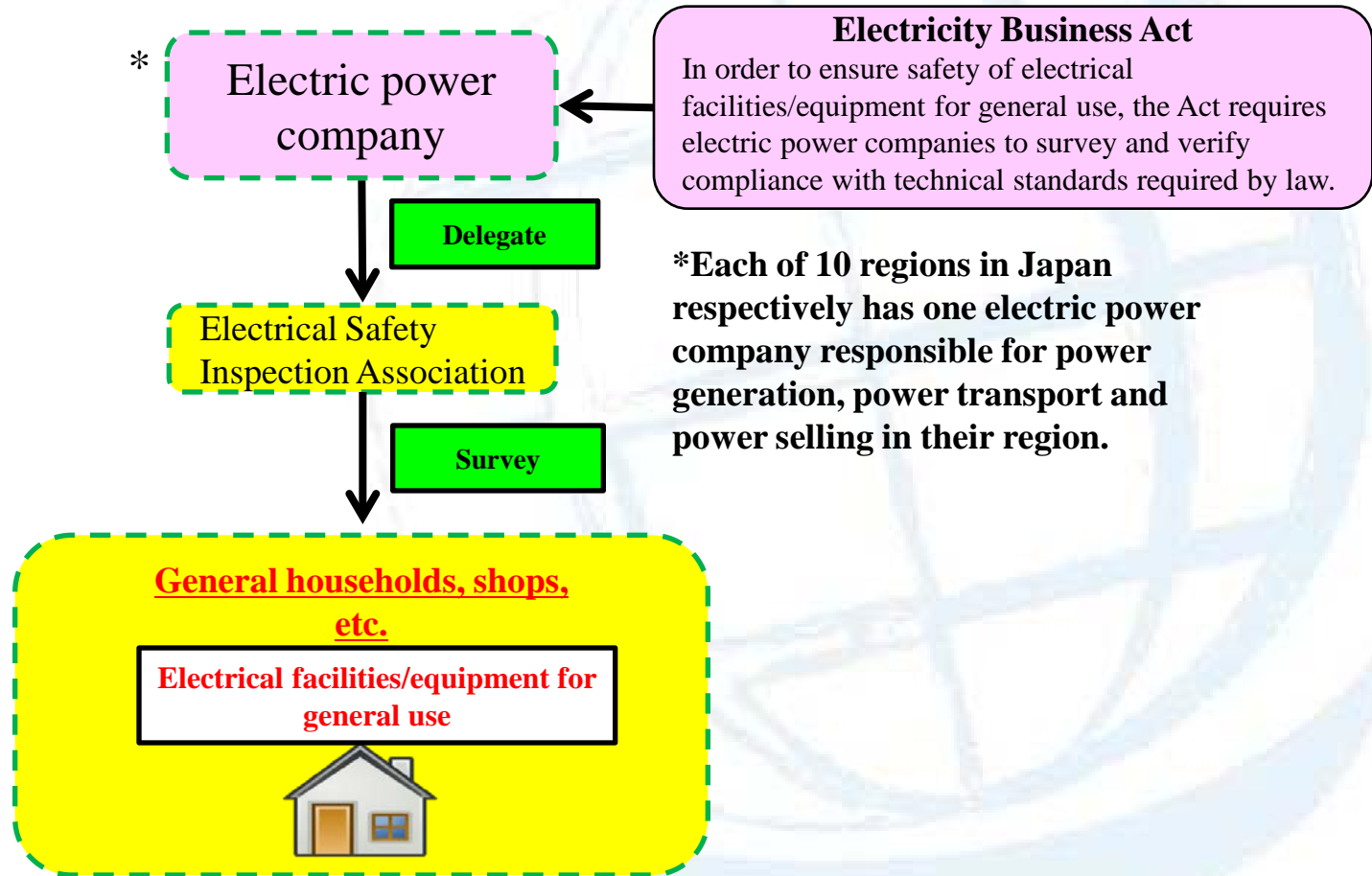


Electrical facilities/equipment for business use



Electrical facilities/equipment for general use

Electrical safety service for general households required under Electricity Business Act



Classification of Electrical safety service for general households defined in Electricity Business Act

Periodic survey

Periodically surveys existing electrical facilities/equipment for general use every four years (or every year depending on the type of facility/equipment)

Construction completion survey

Conducted when any electrical facility/equipment for general use is installed or alteration work is completed

[Reference information]

Number of surveys conducted by Chugoku Electrical Safety Inspection Association

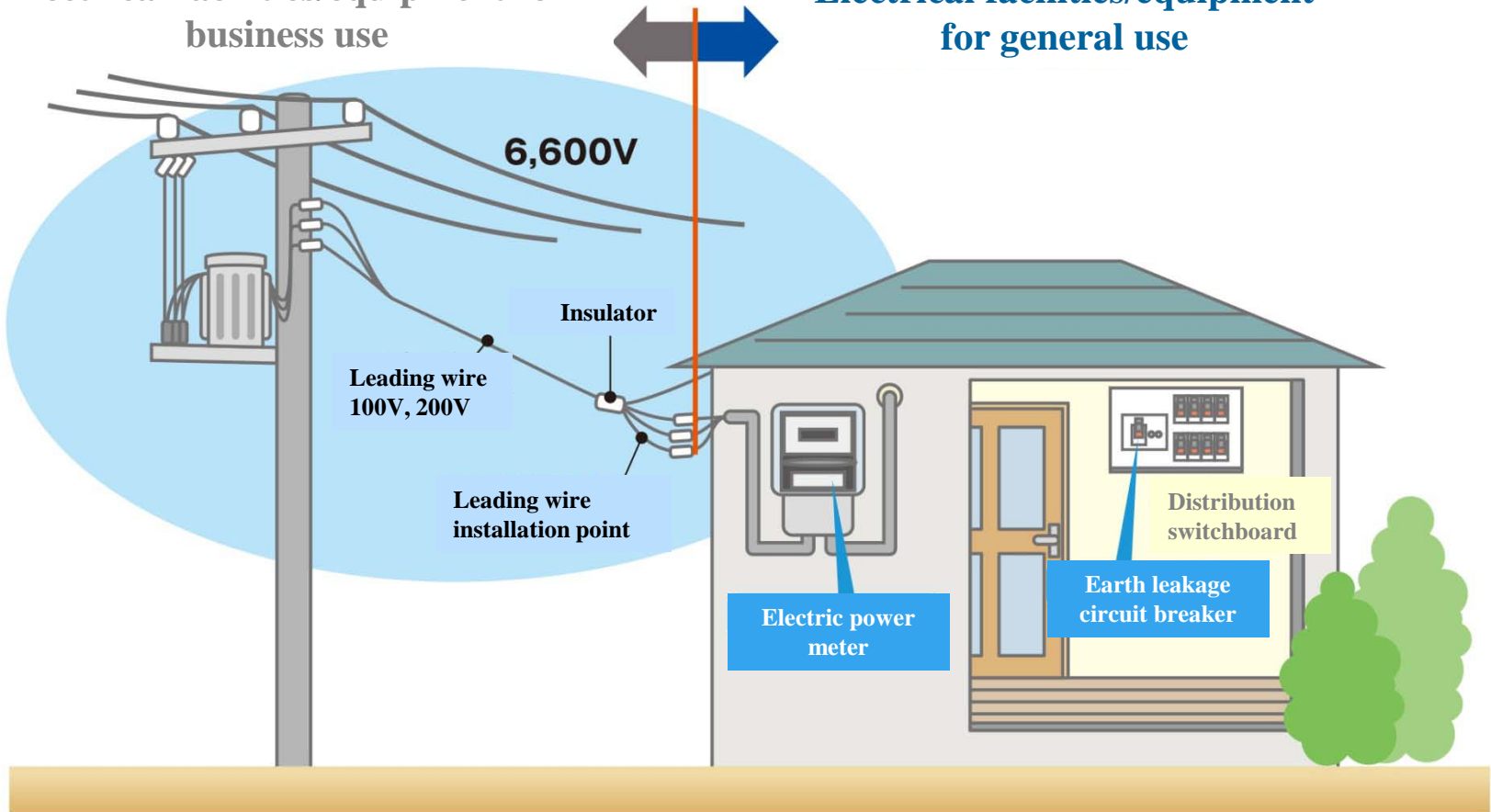
- Periodic survey
Approx. 850,000 times/year
- Construction completion survey
Approx. 250,000 times/year

(Number of surveyors: approx. 250 persons)

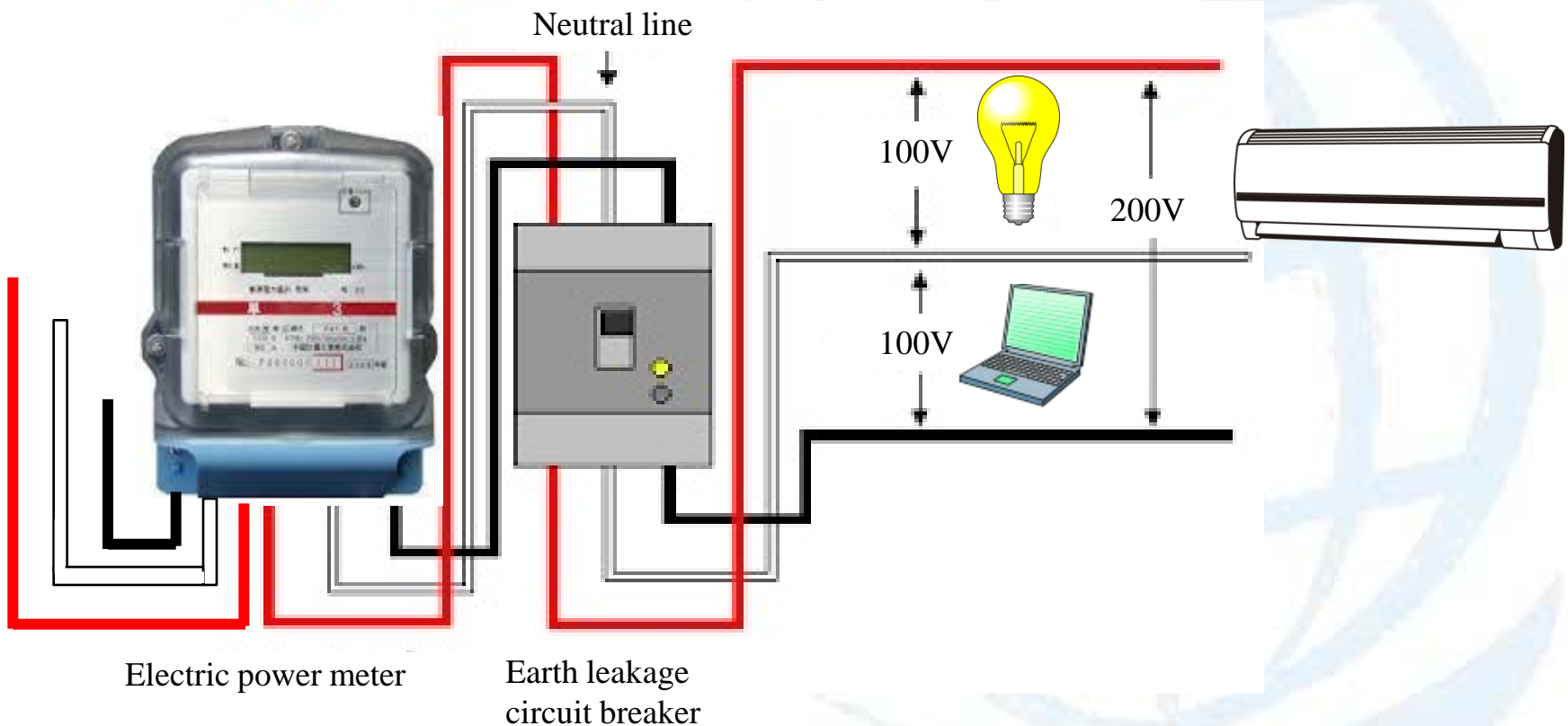
Electrical wiring at general household

Electrical facilities/equipment for business use

Electrical facilities/equipment for general use



Single-phase three-wire system 200V/100V wiring method



Measuring instruments used for electrical safety survey at general households

Leakage current meter



Insulation resistance meter



Earth resistance meter

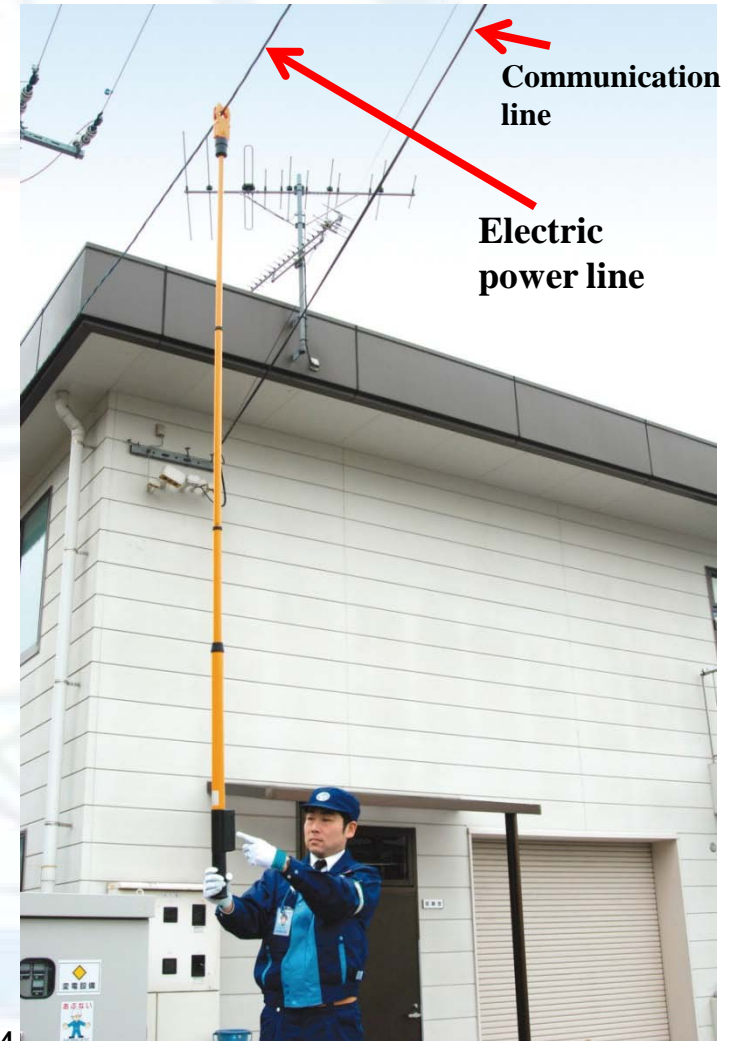


Electrical safety survey using measuring instruments

Insulation resistance measurement



Leakage-current measurement



Workflow of periodic survey

Electric power company



Electrical Safety Inspection Association



(1) Request survey



(3) Inform results



(2) Conduct survey



(3) Inform results

Customer



(7) Conduct resurvey



(8) Inform results of resurvey



(6) Request resurvey

(4) Request repair of faulty point

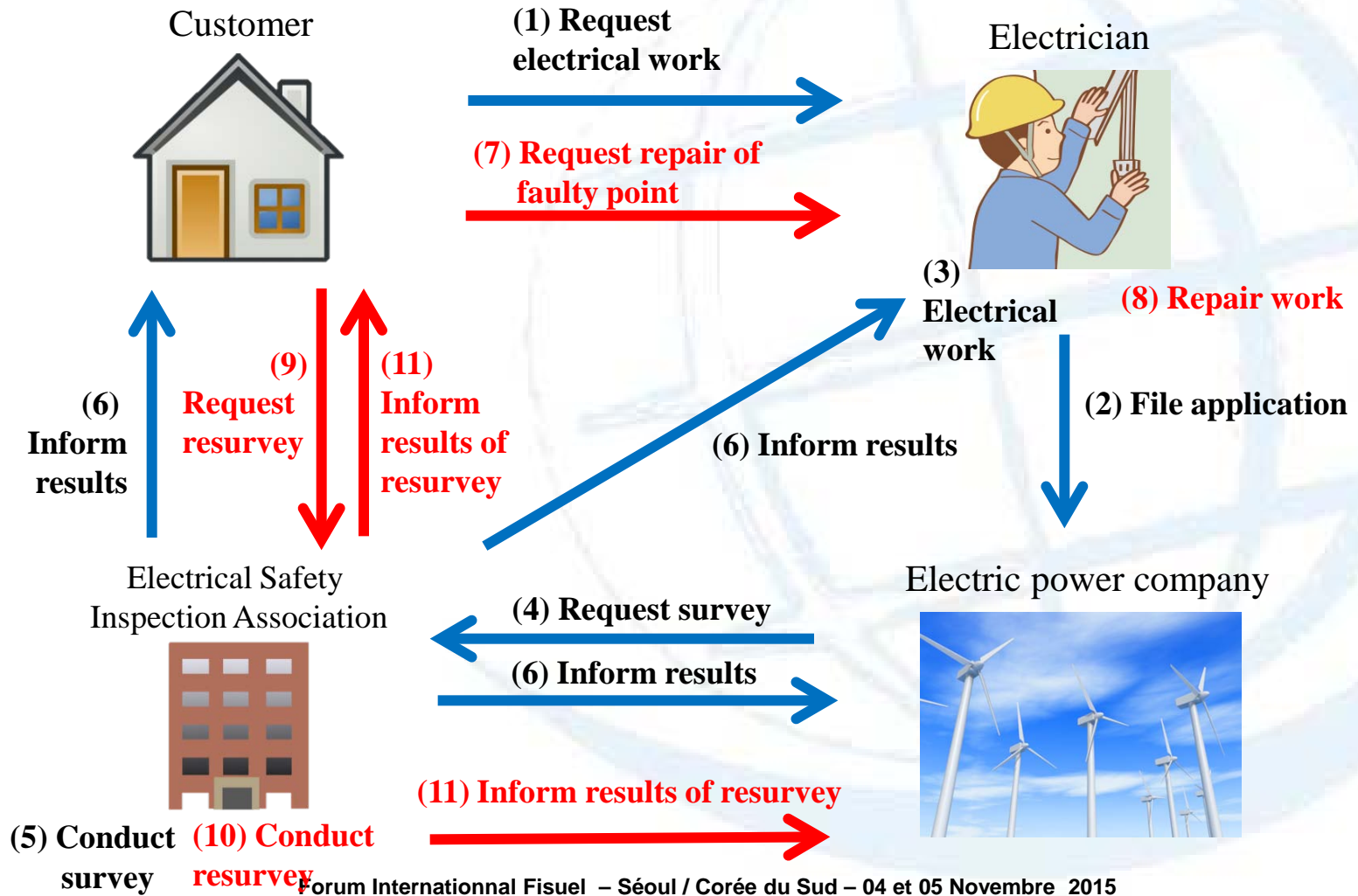


Electrician



(5) Repair work

Workflow of construction completion survey



Mobile terminal device used by periodic surveyors

Appearance



Surveyors use mobile terminal devices to perform their jobs efficiently.

Initial screen

新調査業務実施メニュー	
100%	
調査員名: EUCテストA	
(お客さまデータ取込)	
調査区指定取込	
お客さま指定取込	
(調査業務)	
定期調査データ入力	
実績データ送信	
調査順路変更	
Ver 1.00	終了

Data entry screen
(after entry)

判定	
お客さま名	名前 0208135
種別・業種	
判定	
適合	
お知らせNo	
<input checked="" type="checkbox"/> 1 <input type="checkbox"/> 2 <input type="checkbox"/> 3 指示数 1234	
計器	057理由 <input type="text"/> メモ
戻る	中止 確定

Scene of using the mobile terminal device



THANK YOU

MERCI - 감사합니다



fisuel