

Safety Use of Electricity

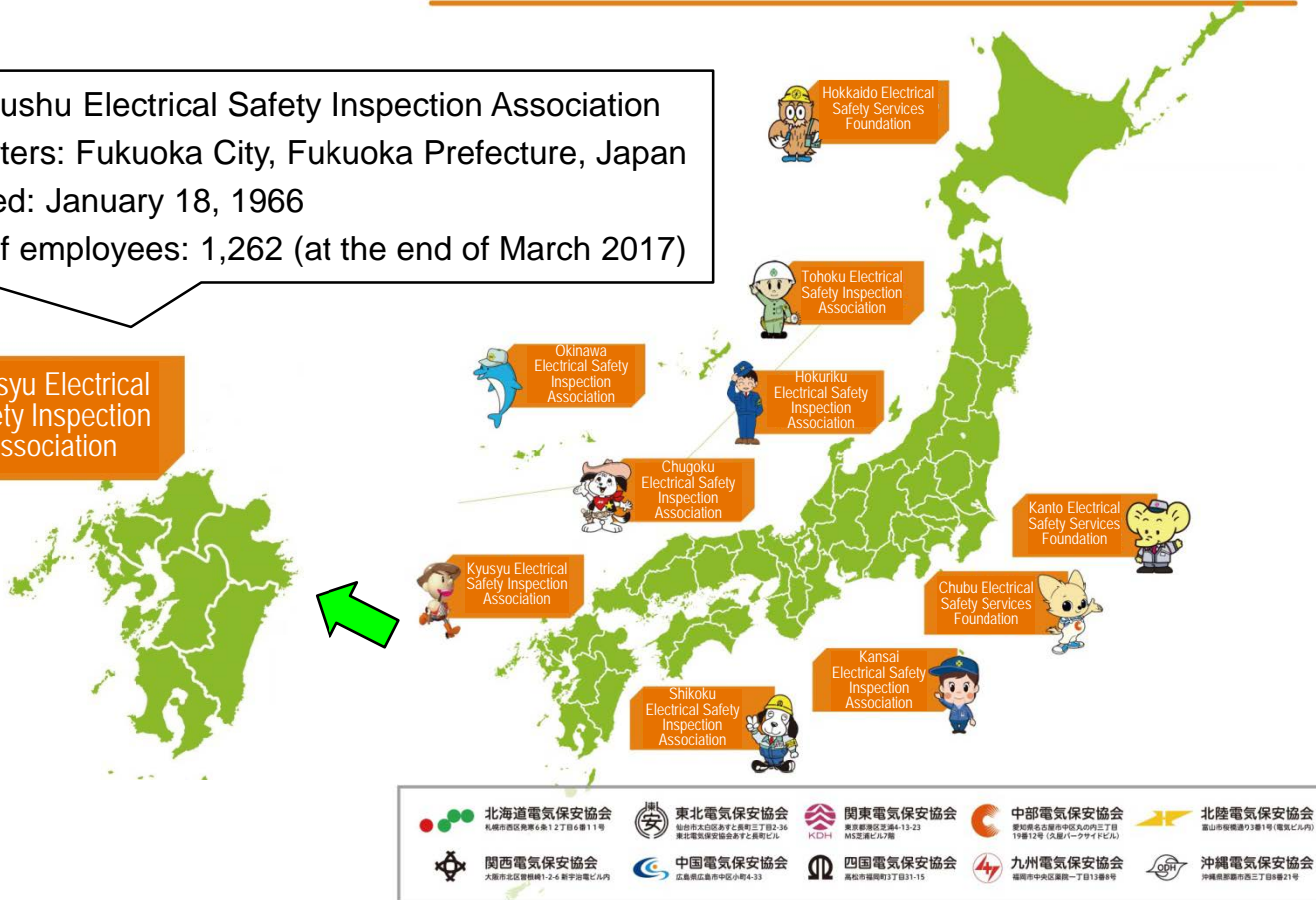
(Experience, Electric Shock & Short
Circuit Accidents)

Toshikazu Yasumori, Safety Group, Operations
Department,
Kyushu Electrical Safety Inspection Association

10 associations and 350 offices linked in Japan

Name: Kyushu Electrical Safety Inspection Association
 Headquarters: Fukuoka City, Fukuoka Prefecture, Japan
 Established: January 18, 1966
 Number of employees: 1,262 (at the end of March 2017)

Kyusyu Electrical Safety Inspection Association



Distributed public relations magazines, etc.



Public relations magazine



Brochure

Street promotions and workshops for safety use of electricity

Street promotions mainly involve distributing handbills, and workshops for safety use of electricity mainly consist of presentations using textbooks and promotional videos for safety use of electricity.

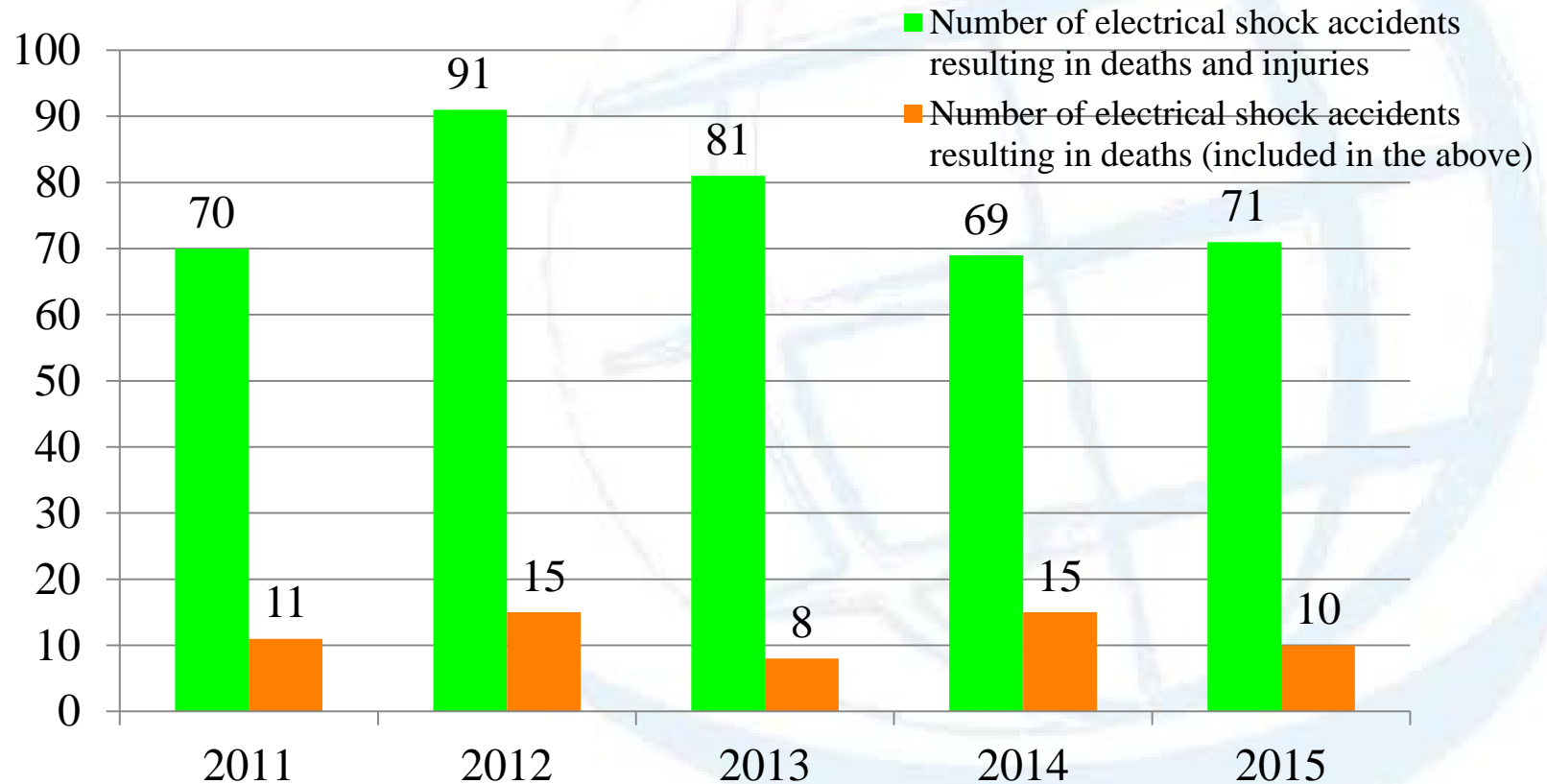


Street promotions



Workshop for teaching primary school children about safety use of electricity

Number of recent electrical shock accidents resulting in deaths and injuries

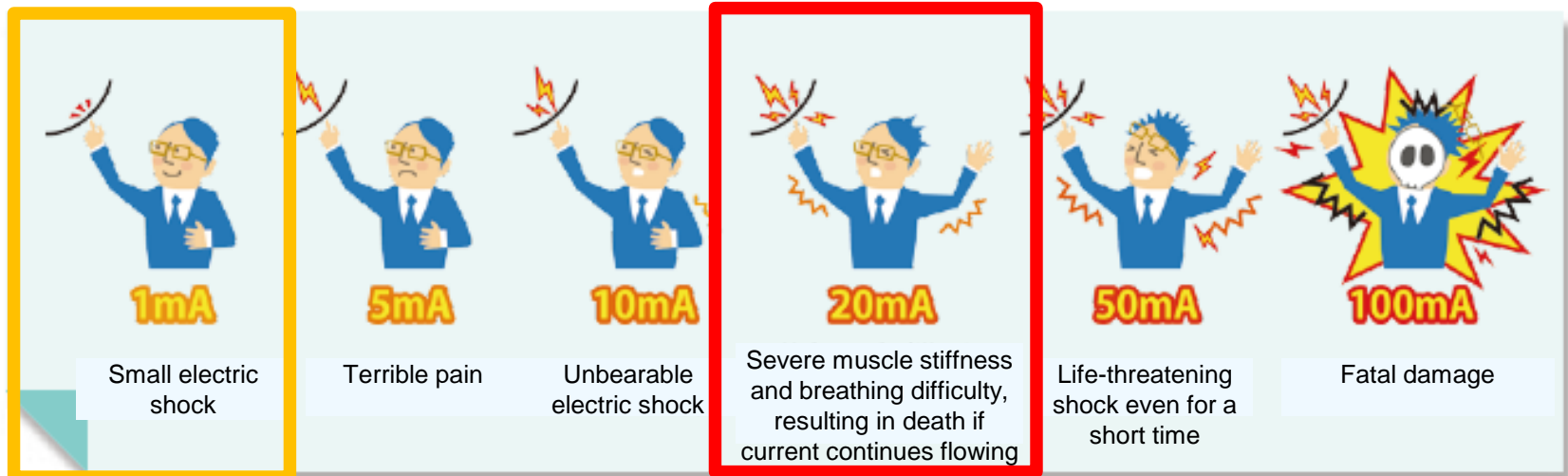


* From Statistics of Electrical Power Safety

Impact of electric shock

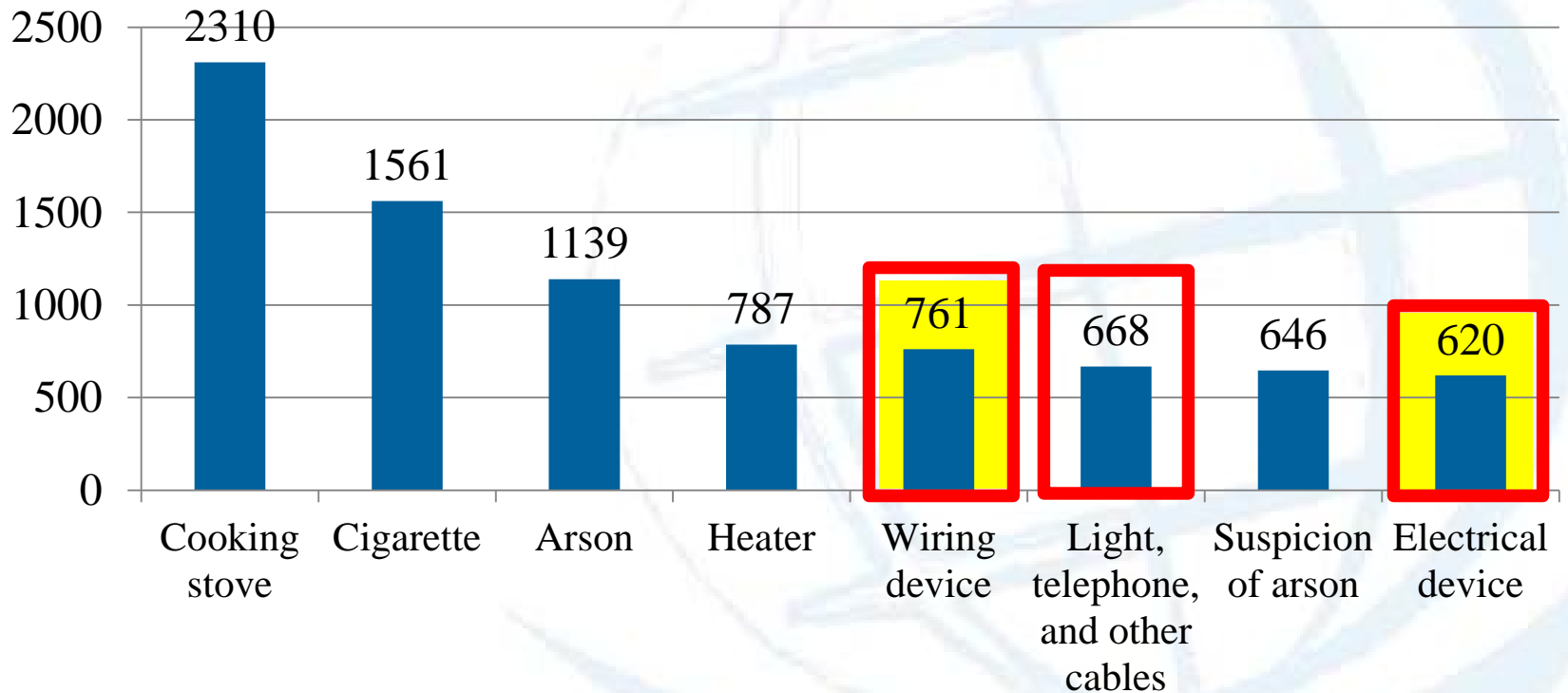
● What happens if you get an electric shock?

Figure: Effects of electric current on human body



Number of building fires from January to September 2016 (15,696)

Main breakdown of fire occurrences according to the cause



Examples of uses leading to fire

Dangerous overloaded sockets leading to fire

The amount of current that can be simultaneously flowed through a cord or wiring device is predetermined (rated capacity). Inserting too many plugs into a power strip (or similar socket) overloads the socket and exceeds the rated capacity, possibly resulting in fire. Electrical products should be connected directly to wall sockets.



Do not unplug by pulling on the power cord

If you pull on the power cord when unplugging from the wall socket, excessive force will be applied to the connected section, possibly causing wires to cut off, resulting in overheating, leading to an unexpected accident. Make a habit of always holding the plug when unplugging from the socket.



Be careful of tracking phenomenon

Do the plugs of electrical appliances such as refrigerators and washing machines remain plugged into wall sockets for a long period? If dust built up between the plug and the wall socket absorbs moisture, it may catch fire, possibly resulting in fire (tracking phenomenon). To prevent such a problem, electrical appliances should be sometimes unplugged and the wall sockets should be inspected and cleaned to ensure safety.



"Carelessness" (forgetting to turn off the switch) leads to danger

If someone visits or calls you while you are using an electrical appliance that generates heat (such as irons or hair driers), it is possible that you may leave there with the electrical appliance turned on. Have you had such an experience? Forgetting to turn off the switch may result in an accident. When you move away from the place where you are using an electrical appliance, make a habit of always turn the switch off and unplug the appliance.



感電体感に関する注意事項

次の方は感電体感をご遠慮ください。

- ①ペースメーカーを使用している方
- ②体調がすぐれない方



感電体感器の操作については、係員の指示に従ってください。

Electric shock experience apparatus



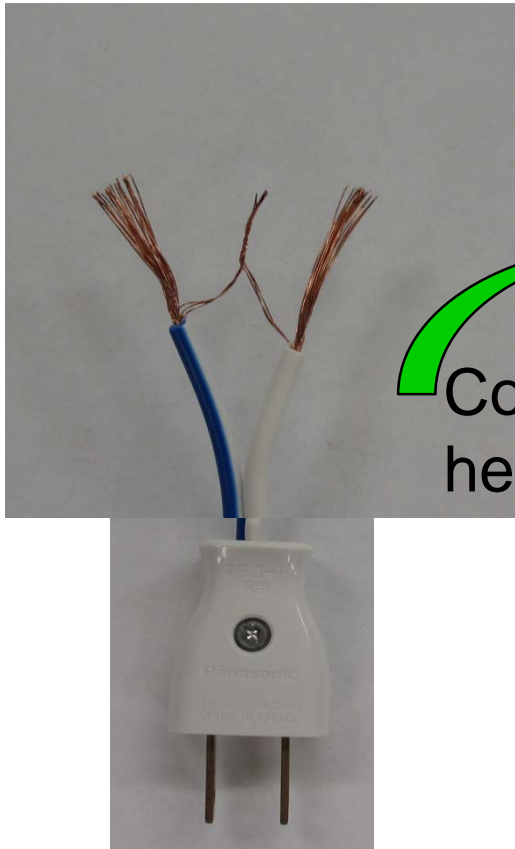
Electric shock experience apparatus



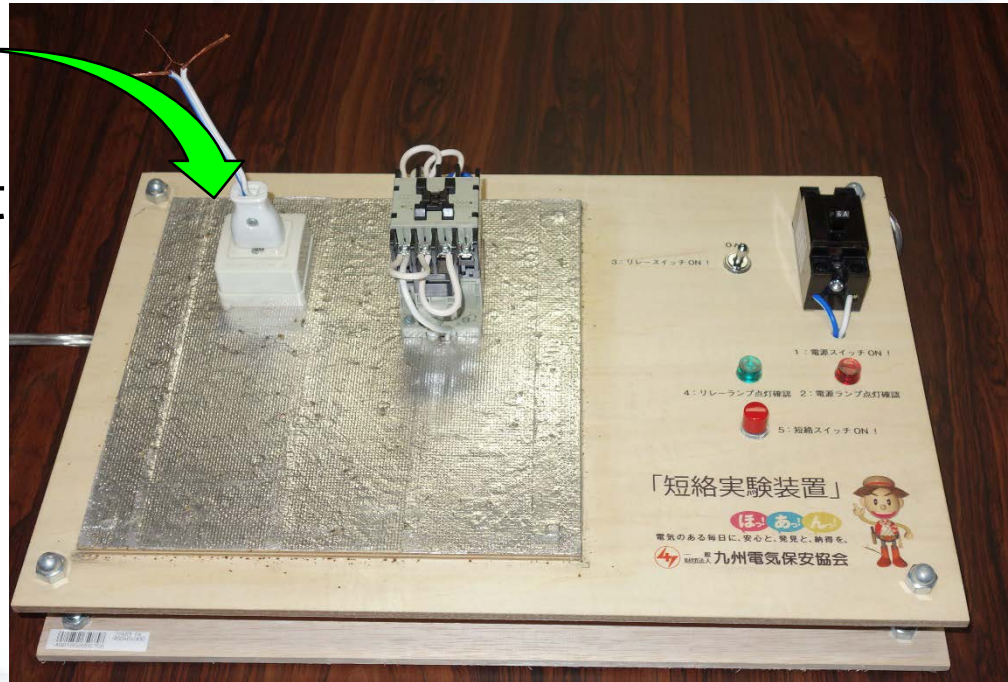
Symposium Fisuel – Indonésie – 10 & 11 Mai 2017

Fisuel Symposium – Indonesia – 10th & 11th of May, 2017

Short-circuit testing equipment

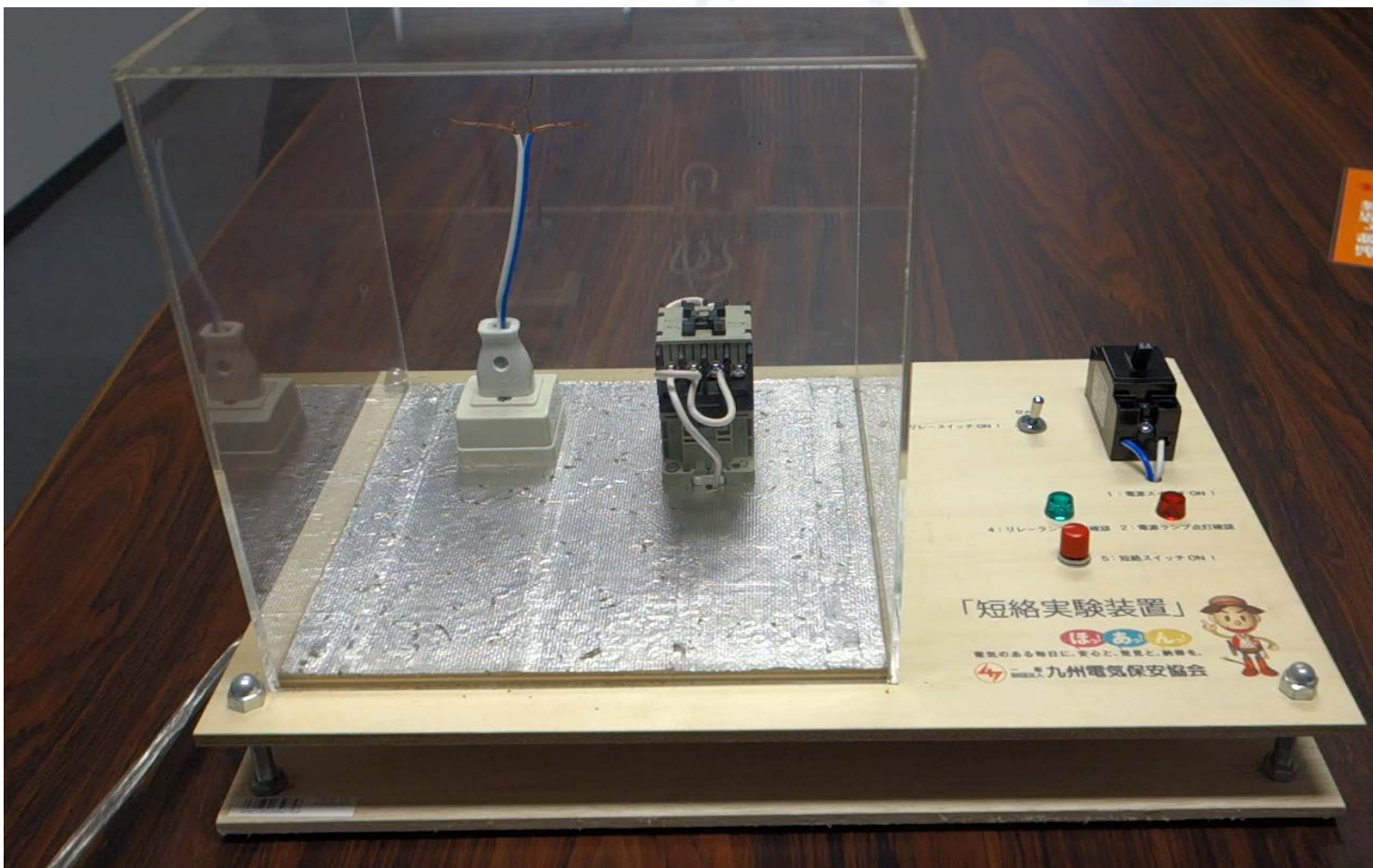


Connect
here



Connect the wires
(To form a short circuit)

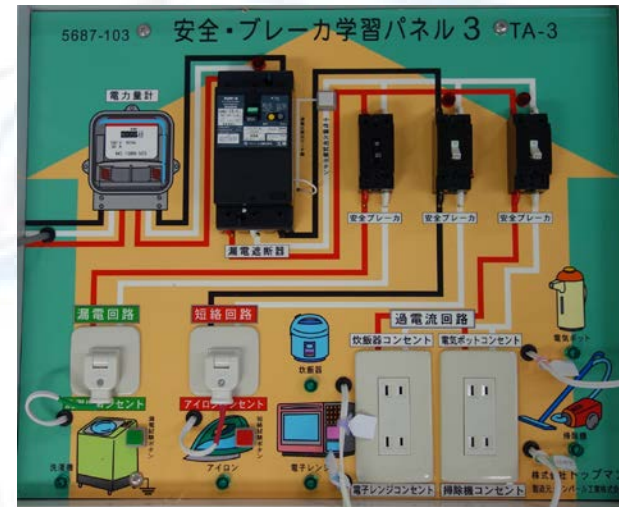
Short-circuit testing equipment



Symposium Fisuel – Indonésie – 10 & 11 Mai 2017

Fisuel Symposium – Indonesia – 10th & 11th of May, 2017

Home distribution board (simulated board)



Superheat demonstration apparatus

THANK YOU

MERCI



fisuel